

HANSEN™

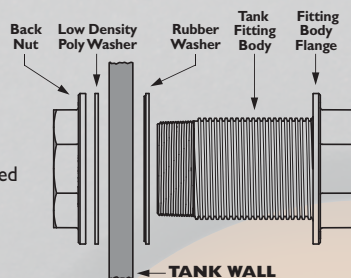
True Fit Tank Fittings



Installation

Pre Installation Checklist

- ✓ Prior to installation, refer to Tank Manufacturers recommendations before drilling outlet in tank wall.
- ✓ All pipe work must be adequately supported.
- ✓ Use a thread sealant on all threaded connections. We recommend Loctite 5331.
- ✓ If you are using chemicals or have any special requirements that you wish to use your Tank Fittings in check our website for Chemical Resistance or don't hesitate to contact us.
- ✓ Please refer right for Minimum Recommended Hole Sizes.
- ✓ Check the sealing surface to ensure it is free from debris and/or scratches which could cause leakage.
- ✓ To obtain proper washer compression for fitting installation ensure the face of the washers fully contacts the tank wall.
- ✓ Tighten the nut to ensure a water tight seal. We recommend Loctite 5331.
- ✓ HANSEN™ True Fit Tank Fitting can be used in conjunction with metal fittings.



Tank Fitting Minimum Recommended Hole Size

Hole Size for 15mm Fitting = 22mm
Hole Size for 20mm Fitting = 27mm
Hole Size for 25mm Fitting = 34mm
Hole Size for 32mm Fitting = 42mm
Hole Size for 40mm Fitting = 48mm
Hole Size for 50mm Fitting = 60mm
Hole Size for 80mm Fitting = 95mm
Hole Size for 100mm Fitting = 121mm

Tank Fitting Recommended Hole Saw Size

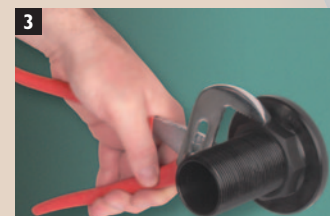
15mm Fitting = 22mm or 7/8" Hole Saw
20mm Fitting = 27mm or 1 1/16" Hole Saw
25mm Fitting = 34mm or 1 3/8" Hole Saw
32mm Fitting = 42mm or 1 5/8" Hole Saw
40mm Fitting = 48mm or 1 7/8" Hole Saw
50mm Fitting = 60mm or 2 3/8" Hole Saw
80mm Fitting = 95mm or 3 3/4" Hole Saw
100mm Fitting = 121mm or 4 3/4" Hole Saw



1. Remove the **Back Nut** and the **Low Density Poly Washer** (the firmer of the 2 washers) from the **Tank Fitting Body**. Slide the **Tank Fitting Body** through the hole in the tank. The **Rubber Washer** must always be between the **Fitting Body Flange** and the tank wall (ensure the ribs on the **Rubber Washer** are sealing against the tank wall).



2. On the other side of the tank wall, slide the **Low Density Poly Washer** back onto the **Tank Fitting Body** and then wind on the **Back Nut**.



3. Tighten the **Back Nut** so that the face of both washers make full contact with the tank wall to obtain a water tight seal. Ensure that you comply with the tank manufacturers specifications. Do not over tighten.



4. When adding additional fittings it is recommended that either a thread sealing paste or thread sealing tape be used on all threaded connections. We recommend LOCTITE 5331

Standards & Approvals



HANSEN™ True Fit Tank Fittings from 15mm to 100mm have been approved in SGS Marine Certificate. The M&I division of SGS New Zealand Limited is the country's largest marine and industrial inspection, testing and Safe Ship Management service provider.

AS/NZS 4020 HANSEN™ True Fit Female Tank Fittings from 15mm to 100mm have met the requirements of AS/NZS 4020 Australia & New Zealand drinking water test standard. See our website for details.

HANSEN PRODUCTS (NZ) LIMITED
PO Box 809 • Whangarei • New Zealand
P: +64 9 430 4140 F: +64 9 430 4141
E: info@hansenproducts.com
W: www.hansenproducts.com

HANSEN
Best Installed Value

Available From:

Best Installed Value

After the success of the Hansen Polythene Pipe Fittings, Hansen Products decided to design and manufacture a range of Tank Fittings as there was a high demand for high quality non-metallic threaded fittings. The Hansen range of *TrueFit* Tank Fittings was consequently born and have become well recognised internationally in both domestic and commercial markets for their reliable, dependable sealing capabilities.

Traditionally the Tank Fittings main use has been exactly as its name describes, for tanks! But in actual fact the Hansen Male and Female Tank Fittings have a greater variety of uses: Tanks, Troughs, Marine applications, Campers, Caravans, Irrigation, Home applications and a wide range of other domestic and commercial settings. With the addition of SGS Marine and potable water approvals, the Hansen range of *TrueFit* Tank Fittings have the qualifications that assure you have chosen the best tank fitting solution available for your application.

With over 50 years experience in manufacturing, Hansen Products knows the importance that pipe fittings play in the performance and control of fluid delivery, flow and pressure within a pipe system. This has seen Hansen Products build a reputation for providing high performance, easy to use, innovative, simple products that provide our customers with "Best Installed Value".

All Hansen products carry our Lifetime Warranty*

*For more information on our warranty please visit www.hansenproducts.com/legal.htm

Features & Benefits

- Durable, High Strength, Commercial Quality *TrueFit* Tank Fittings
- Manufactured from UV Stabilised High Quality Glass Fibre Reinforced Nylon giving a weather, termite, fungi and bacterial resistance
- Material Approved for use with Potable (drinkable) Water
- Precision Heavy Duty Tapered Threads give a Strong Reliable Seal.
- Material is strong enough to minimise potential cross threading.

Rural



Agriculture



Marine



Horticulture



Irrigation



Domestic



Female Tank Fitting

Female Tank Fitting - SFTFT

With a direct winding threaded back nut.
Sizes: 15mm, 20mm, 25mm, 32mm, 40mm, 50mm.



Large Female Tank Fitting - SFTFT

With a dedicated reverse threading back nut.
Sizes: 80mm, 100mm



Accessories

Female Tank Fitting Parts



Large Back Nut
SBNL

LDPE Washer
SWLP

Rubber Washer
SWLR

Large Female Tank Fitting Parts



Back Nut Left Hand
Thread - SN(LH)

LDPE Washer
SWLP

Rubber Washer
SWLR

Male Tank Fitting

Black Male Tank Fitting - SFT(B)

Sizes: 15mm, 20mm, 25mm, 32mm, 40mm, 50mm



White Male Tank Fitting - SFT(W)

Sizes: 15mm, 20mm, 25mm, 32mm, 40mm, 50mm



Accessories

Female Tank Fitting Parts



Back Nut Black
SBN(B)

LDPE Washer
SW(PB)

Rubber Washer
SW(B)



Back Nut White
SBN(W)

LDPE Washer
SW(P)

Rubber Washer
SWR(W)

Tanks



Troughs



Boats



Homes & Pools



Camper Vans



Caravans

